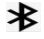


Instructions for the "Temp Logger" for IOS

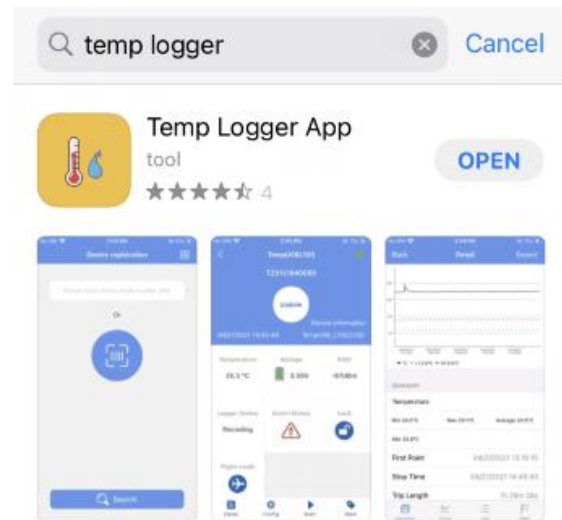
"Temp Logger" is a free application developed by our company for users . It can connect TempU06 series products through Bluetooth of mobile device, and set, transmit and record the data. Through the Bluetooth Low Energy (BLE), you can use an Apple smartphone to monitor temperature and humidity.

1. Turn on the Bluetooth

Press and hold the start button and stop button of the device for more than 3s until the  symbol appears on the LCD screen.

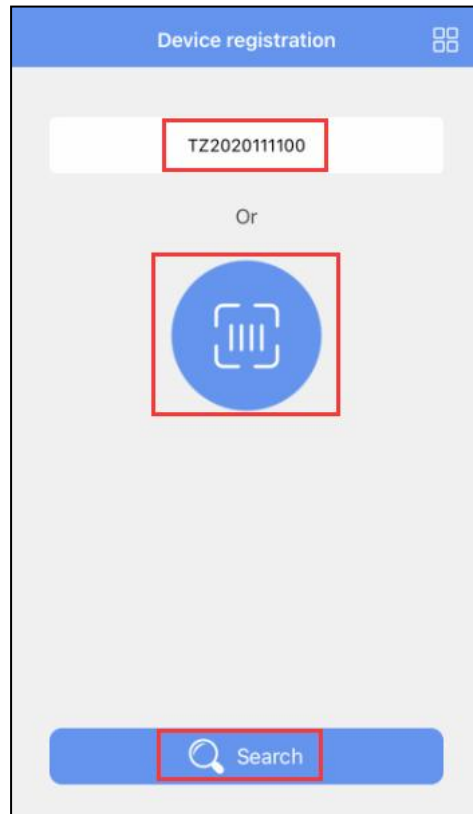
2. Download and install APP

Into Apple APP Store and type “ Temp Logger” to download (Support iOS 14.0 or newer)

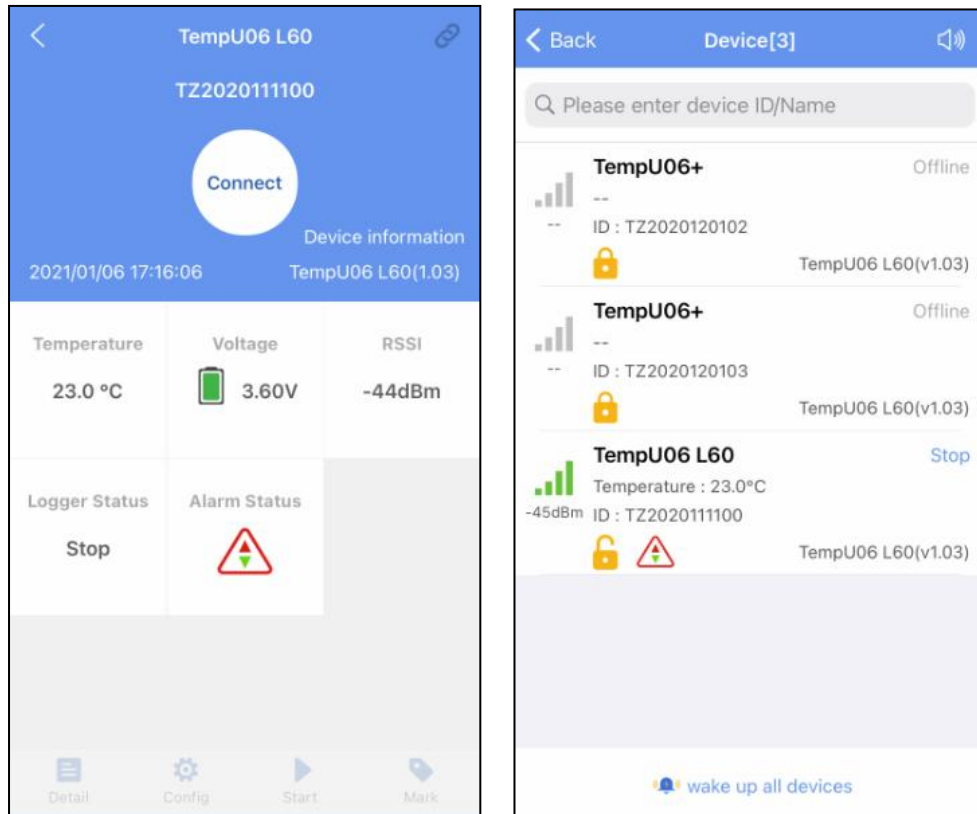


3. Device Registration

3.1 Open the APP, enter the device ID directly to register on the homepage, or scan the QR code to get the device ID, or do not enter any ID and directly click search to find the device .

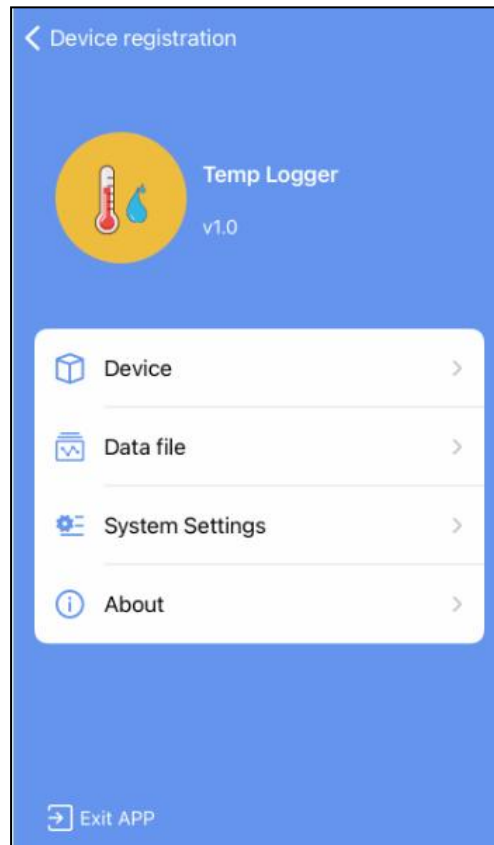


3.2 Enter the device connection page and click Connect. After a successful connection, the device ID will be displayed on the "Devices" page, indicating that the device has been registered successfully .



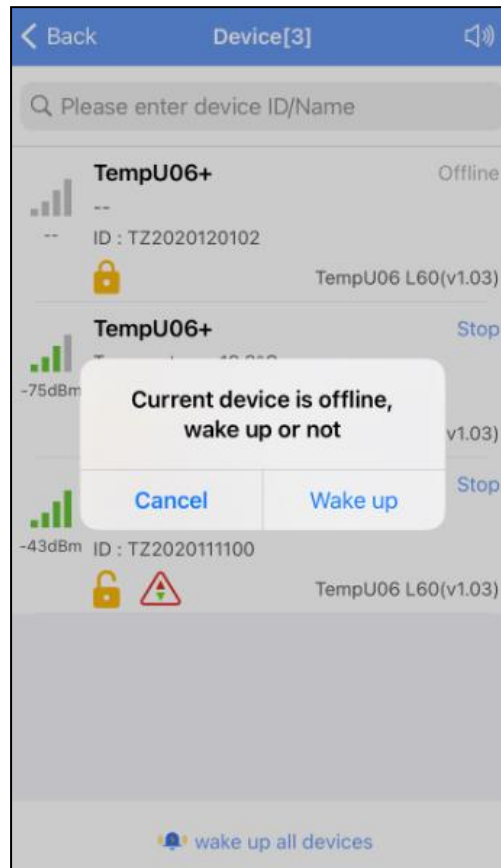
4. Device View

Click the icon in the upper right corner of the home screen to expand the main menu. You can select the menu function and click “device” to enter the multidevice interface. The functions of the device interface are as follow:



4.1 To view device information

The name, ID, temperature data, model, and status of all the current devices can be viewed, or you can view the specific device information by ID, name.



Status description of the device in different symbols:



: Unlock



: Level-1 access key or Level-2 access key



: High temperature alarm



: Low temperature alarm



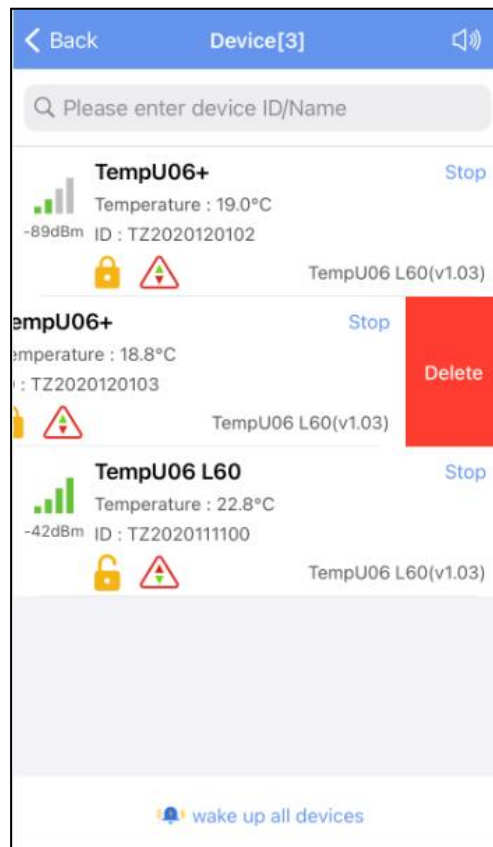
: Temperature alarm (including both high and low temperatures)



: Connect the device to the computer (if the device has been already connected to the computer, the APP cannot be connected to the device.)

4.2 Delete the device:

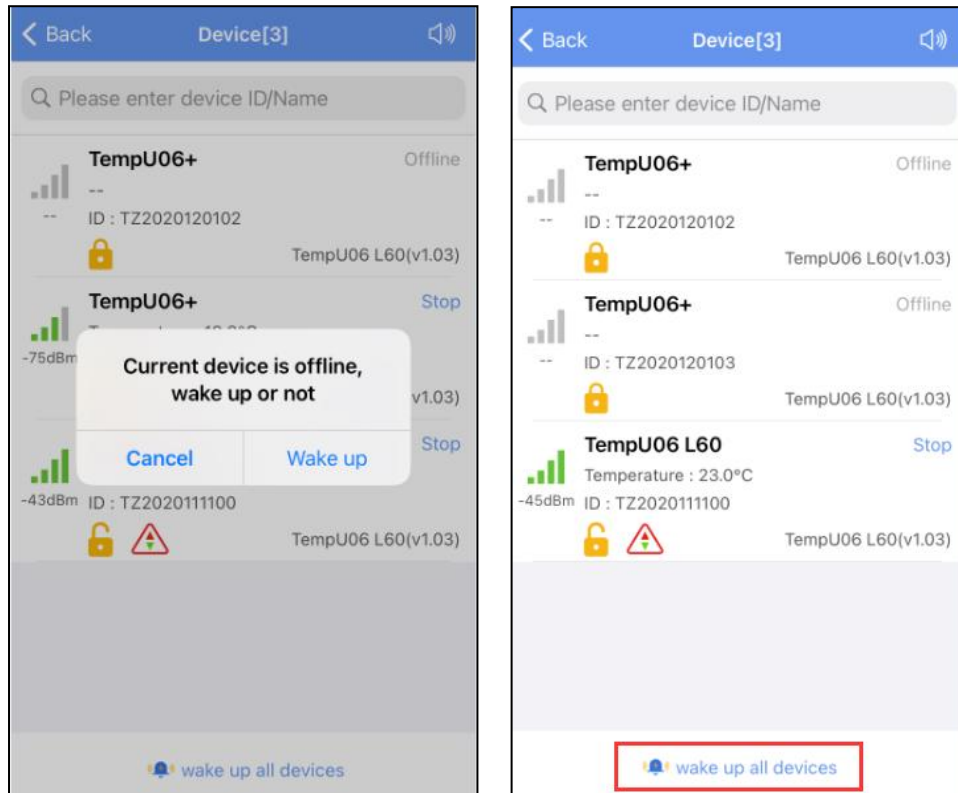
Slide to the left to delete the device:



4.3 Wake-up devices in flight mode

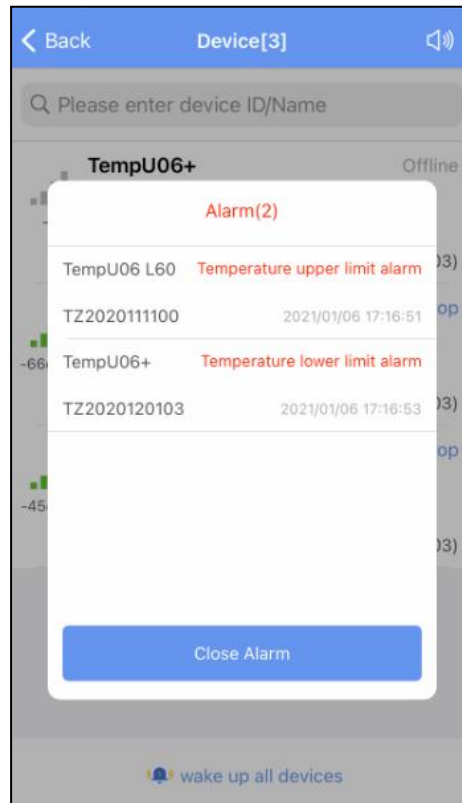
A: Short press this device to wake up a single device;

B: Click "Wake up all devices" below to wake up all devices.



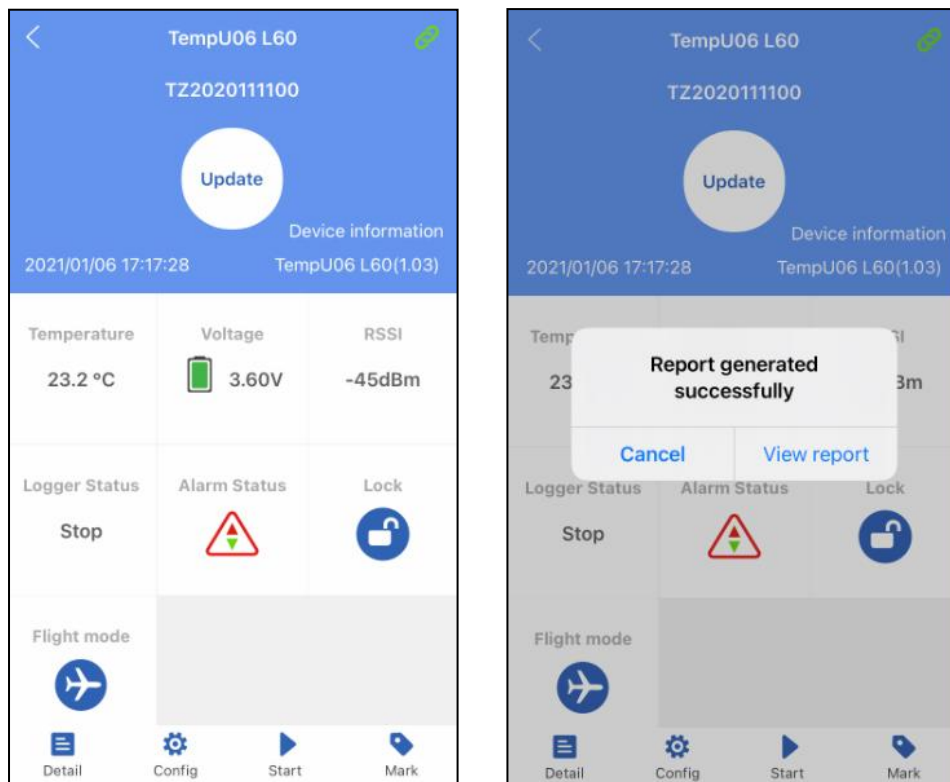
4.4 Device alarm:

When the device exceeds the preset upper or lower limit, the alarm information will be displayed, and the alarm bell will ring. Clicking "CLOSE ALARM" to turn off the alarm information and alarm bell.



5. Device connection

Click a single device quickly to enter the connection interface. It will display the temperature, voltage, RSSI, alarm status and logger status of the device. Click "CONNECT," and jump to update after the connection is successful, indicating that the device has been successfully connected and read the current data content. After the connection is successful, it will prompt you whether to view the report, or the access key and flight mode of the device will be displayed. Four buttons will be displayed at the bottom of the interface:



Note: The device will not update the data in the connection process. By default, the device will be disconnected after 1 minute and the four buttons at the bottom will become gray and cannot be clicked again.

5.1 Device access key

Click "Access Key" to encrypt the device, and set the level-1 and level-2 access keys.

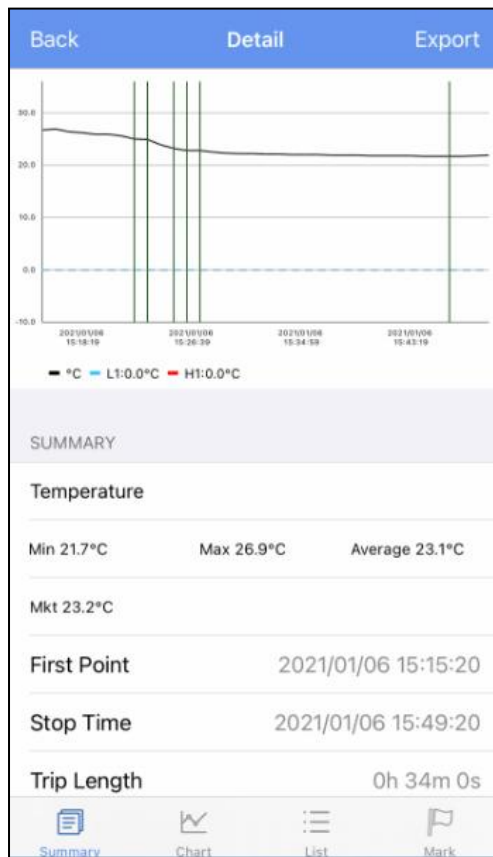
5.2 Flight mode

Click "Flight Mode" and the device will enter flight mode without sending broadcast data. In the multidevice interface or press the Start and Stop buttons for 3s at the same time to exit flight mode.

5.3 Detail and email function

Click "Detail" to view all information reports of the device. Click "EXPORT" to generate PDF and CSV reports, and send the reports to the designated mailbox by email.

A:Details summary



Back

Detail

Export

Trip Length	0h 34m 0s
Number of Points	35

DEVICE INFORMATION

Device name	TempU06 L60
ID	TZ2020111100
Firmware version	1.03

ALARM

Alarm condition	No.of Violations	Status
--	--	--
H1: Over 0.0°C	1	Alarm
L1 :Below 0.0°C	0	OK
--	--	--

Summary

Chart

List

Mark

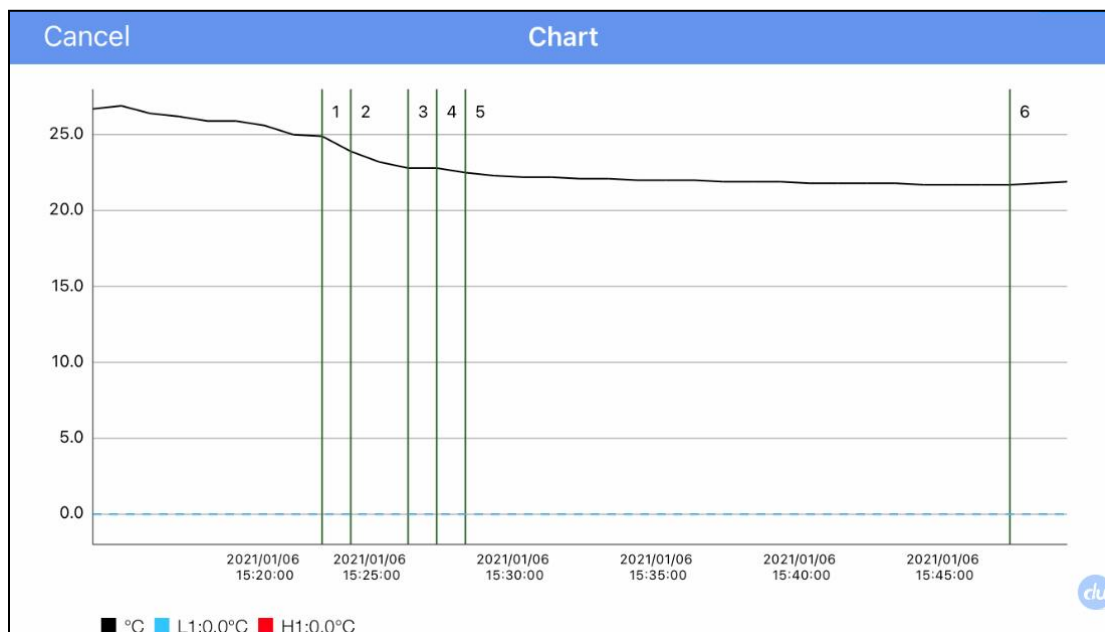
Back Detail Export

ALARM		
Alarm condition	No.of Violations	Status
--	--	--
H1: Over 0.0°C	1	Alarm
L1 :Below 0.0°C	0	OK
--	--	--
REPORT INFO		
Start Delay	0 min	
Log Interval	60 s	
Start Mode	App start	
Stop Mode	App stop	
Description	Temperature	

Summary Chart List Mark

Note: The smartphone must have a mailbox APP and login account to send email.

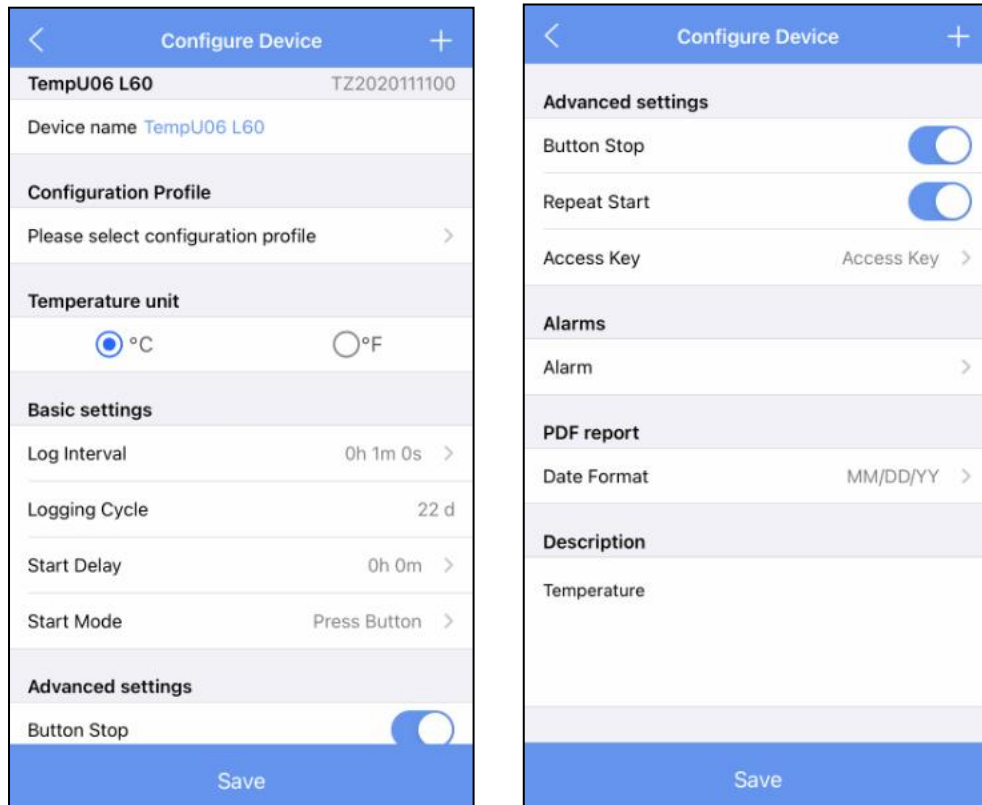
B: Chart:



C: List:

Back		List
NO.	Date	Temperature
1	2021/01/06 15:15:20	26.7°C
2	2021/01/06 15:16:20	26.9°C
3	2021/01/06 15:17:20	26.4°C
4	2021/01/06 15:18:20	26.2°C
5	2021/01/06 15:19:20	25.9°C
6	2021/01/06 15:20:20	25.9°C
7	2021/01/06 15:21:20	25.6°C
8	2021/01/06 15:22:20	25.0°C
9	2021/01/06 15:23:20	24.9°C
10	2021/01/06 15:24:20	23.9°C
11	2021/01/06 15:25:20	23.2°C
12	2021/01/06 15:26:20	22.8°C
13	2021/01/06 15:27:20	22.8°C
14	2021/01/06 15:28:20	22.5°C
15	2021/01/06 15:29:20	22.3°C

D: Mark:



6.1 Device name: The device name can be modified (up to 15byte) by users.

6.2. Configuration file: The configuration information can be saved by clicking the "+" button which in the upper right corner of the configure page. After saving, you can select the configuration with the corresponding name in the "configuration file".

6.3 Temperature unit: Celsius or Fahrenheit.

6.4 Basic settings:

A: Logging interval: Record time of the stored data (range:10s~18h, default:10mins).

B: Logging cycle : It changes with the logging interval.

C: Start delay: Delay time of the stored data (range: 0s~4.23h, default:30mins)

D: Startup mode: You can choose two start modes "press the button to start" or "timing start" (default: press the button to start).

6.5 Advanced settings

A: Disable stop button: You can choose "disable stop button" or "cannot disable the stop button" (default: disable stop button).

B: Repeat start: You can choose "repeat start" or "cannot repeat start" (default: cannot repeat start).

C: Access key: You can choose to turn it on or off. The access key system has two levels. At level 1, the report can be viewed directly without the access key; at level 2, the information can be viewed only after entering the access key (default: the access is turned off);

6.6 Alarms: You can choose to turn off or turn on the alarm. (default: turn off alarm)

Alarm setting: The alarm type, alarm delay, and temperature value can be set (only the alarm settings of H1 and L1 are turned on by default. There is only one alarm type. The alarm delay is 10 mins, and the temperature range is 2°C~8°C).

Note: H1 and L1 must be set at the same time. If H2 or L2 is set, H1 and L1 must be turned on at the same time.

6.7 PDF report:

Data format: MM/DD/YY HH:MM:SS or DD/MM/YY HH:MM:SS (default: MM/DD/YY HH:MM:SS)

6.8 Description: You can set a description for this device (up to 55 characters, default: Temperature Recorder).

6.9 Start or stop

You can set whether the device starts or stops through the APP.

6.10 Marking

Click to mark the current time and temperature value of the device (up to 6 times).

7. Data files

Click the "Data Files" menu bar to enter to the data files interface. The functions of the device interface are as follows:

< Back				Data file	Edit
0	TZ2020120102	2021/01/04 15:24:50	>		
1	TZ2020120102	2021/01/04 16:24:42	>		
2	TZ2020120102	2021/01/04 16:56:46	>		
3	TZ2020120103	2021/01/04 18:35:32	>		
4	TZ2020111100	2021/01/05 10:18:12	>		
5	TZ2020111100	2021/01/06 15:20:56	>		
Compare			Delete		

7.1 To View a single data file

The time displayed in this file is the time when the device data is read for the first time. The information will be updated after each read until the machine stops recording.

7.2 Chart report comparison supporting up to 5 files

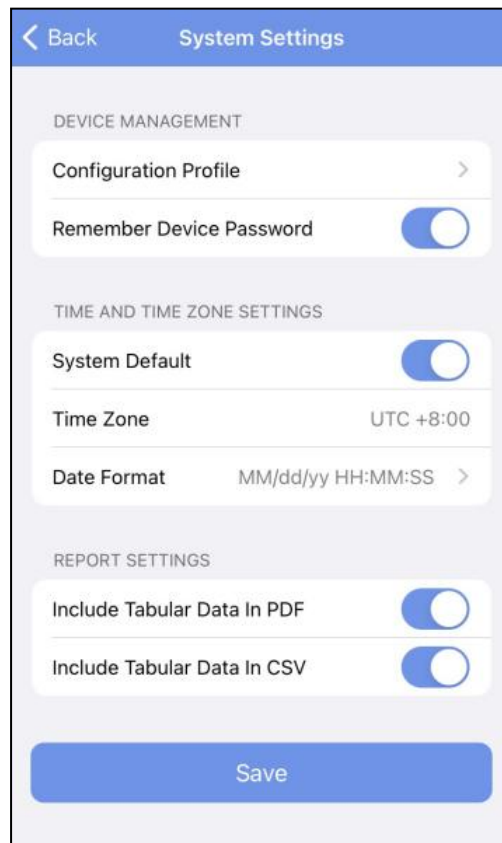
Check the data file and click "Comparison" to compare the temperature chart reports of different data files.

7.3 Delete data file

Check the data file and click "Delete" to delete the data file.

8. System setting

Click the "System setting" menu bar to enter the system setting interface. The functions of the system setting interface are as follows:



8.1 Configuration file: You can view the configuration file saved in "Configure".

8.2 Remember the device access key:

Don't turn on the switch: enter the access key every time you connect the device

Turn on the switch: when connection the device, you only need to input the access key once (default: remember the key).

8.3 Time zone

It is used to set the the time zone of the APP and the time zone report by the logger (default: system default).

8.4 Report settings

A. Include Tabular Data in PDF: Select include or exclude (default: include).

B. Include Tabular Data in CSV: Select include or exclude (default: include).