

# Vibration Management Software

——User manual

## Table of Contents

I. Functions .....	2
1. Toolbar .....	2
2. Status Bar .....	3
II. Read Data .....	3
1. Connect data logger .....	3
2. Read data form the logger .....	3
3. History Data .....	3
III. Summary .....	4
IV. Report .....	5
V. Config .....	6
VI. Database .....	8
1. Filter data .....	8
2. Comparison .....	9
3. View Detail .....	10
4. Delete Data .....	10
5. Backup & Restore .....	11
VII. Export .....	12
1. Export PDF、CSV、TXT data .....	12
2. Export Private file .....	12
3. Send E-Mail .....	13
4. Print .....	14
5. Import Data .....	14
VIII. Settings .....	15
1. User Preference .....	15
2. Mail Setting .....	15
3. Report Setting .....	16
IX. About the updated of the software .....	16
X. Questions .....	16

Note: Support for Windows 10 or newer

# I. Functions

## 1. Toolbar



### 1) Device

After the user connects the data logger to the computer, the software will automatically read the data in the logger. After successfully reading the data of the logger, the software will display the device information of the logger in the summary information interface. At the same time, calculate and summarize the read data and display statistical results.

### 2) Report

The data chart includes graph and data table, and the data will be displayed here after reading the data by connecting the logger. Or draw the data from the historical data for comparison and display. The graph is plotted according to the data. The data table will show all the data including serial number time and temperature or acceleration.

### 3) Parameter

After the user successfully connects the logger to the computer, you can set the parameters of the logger here. Including: Recording interval, Startup delay, time trip description and alarm settings etc.

### 4) Database

Read the logger data will be automatically saved to the database, the user can view the data in the logger at any time. Data can also be filtered as needed. You can select the time range to view the data, support filtering alarm data, The data can be viewed and compared at the same time, Supporting multiple graph drawing, parameter comparison and other function.

### 5) Export

The imported data supports the processing of custom format data files, which is convenient for multi-user data share, view and print. It also supports send the data in the recorder by mail. This function will automatically export the data in the currently displayed data chart. It supports exporting to PDF, CSV and other format files and sending it to the mailbox specified by the user.

### 6) Settings

The user can set a custom date format. After the setting is saved, the format display

will be updated after the data is retrieved. You can set the mailbox parameters. Including the SMTP server address and the sender's email account; Support LOGO modification in PDF reports.

**7) About**

Display the software information and version.

**8) Help**

Open the help document.

**9) Exit**

Exit the software.

**10) Run as administrator**

If the USB data cannot be read or an exception is reported, please use the administrator to run.

## **2. Status Bar**

Shows the status of the current recorder connection, progress of reading data etc.

## **II. Read Data**

### **1. Connect data logger**

Before reading the data, please connect the logger to your computer.

[Note: Only one logger can be connected to the software at a time. It does not support simultaneous operation of multiple loggers.](#)

### **2. Read data form the logger**

Insert the logger into computer and the software will automatically read the data from the logger.

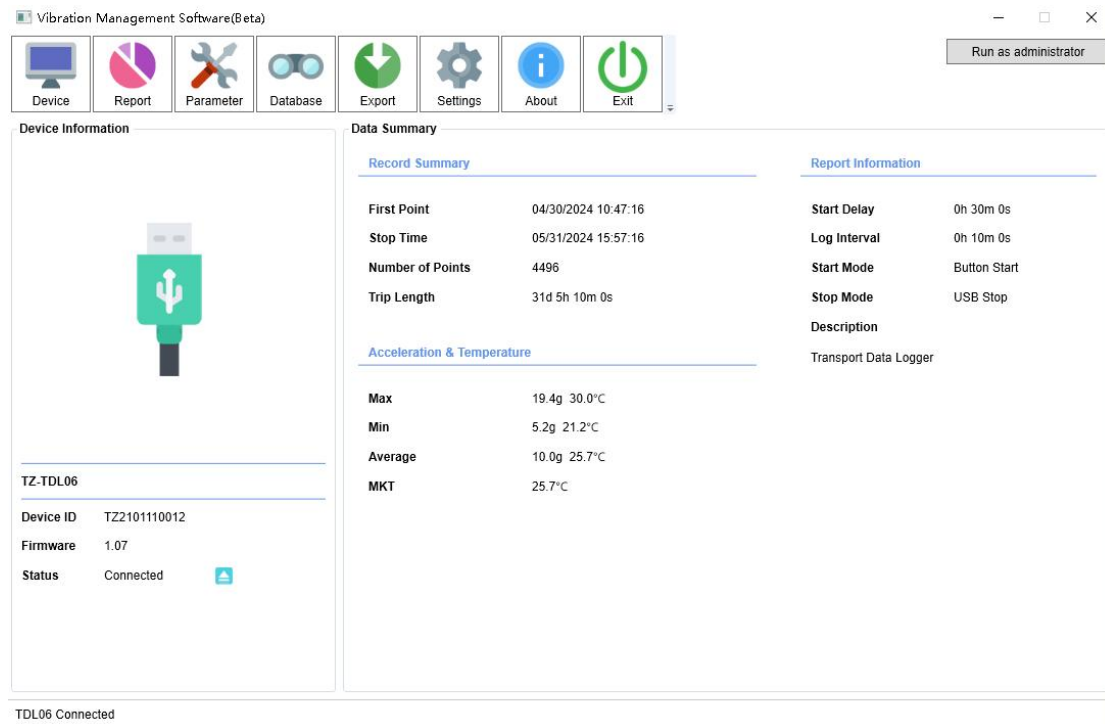
### **3. History Data**

**【Operation path】** "Database" .

**【Function Description】** After the data is successfully read, it will be automatically

saved in the database. You can view the previously read data in the "Database" interface.

### III. Summary



【Device ID】 The unique ID of data logger, it can't be changed.

【Firmware】 The logger's internal program version number.

【Status】 The current working status of logger.

【First Point】 The time when the first point is recorded.

【Stop Time】 The time when the last point is recorded.

【Number of Points】 The amount of data the software reads from the logger.

【Trip Length】 The total time that the logger keeps recording.

【Start Delay】 The time from the logger started to the first point saved.

【Log Interval】 The interval time between two successive points of data.

【Start Mode】 The mode the logger to be started, including button start, timing start.

【Stop Mode】 The logger's actual stop mode, manual stop, USB stop and storage full stop.

【Description】 A brief description of the task.

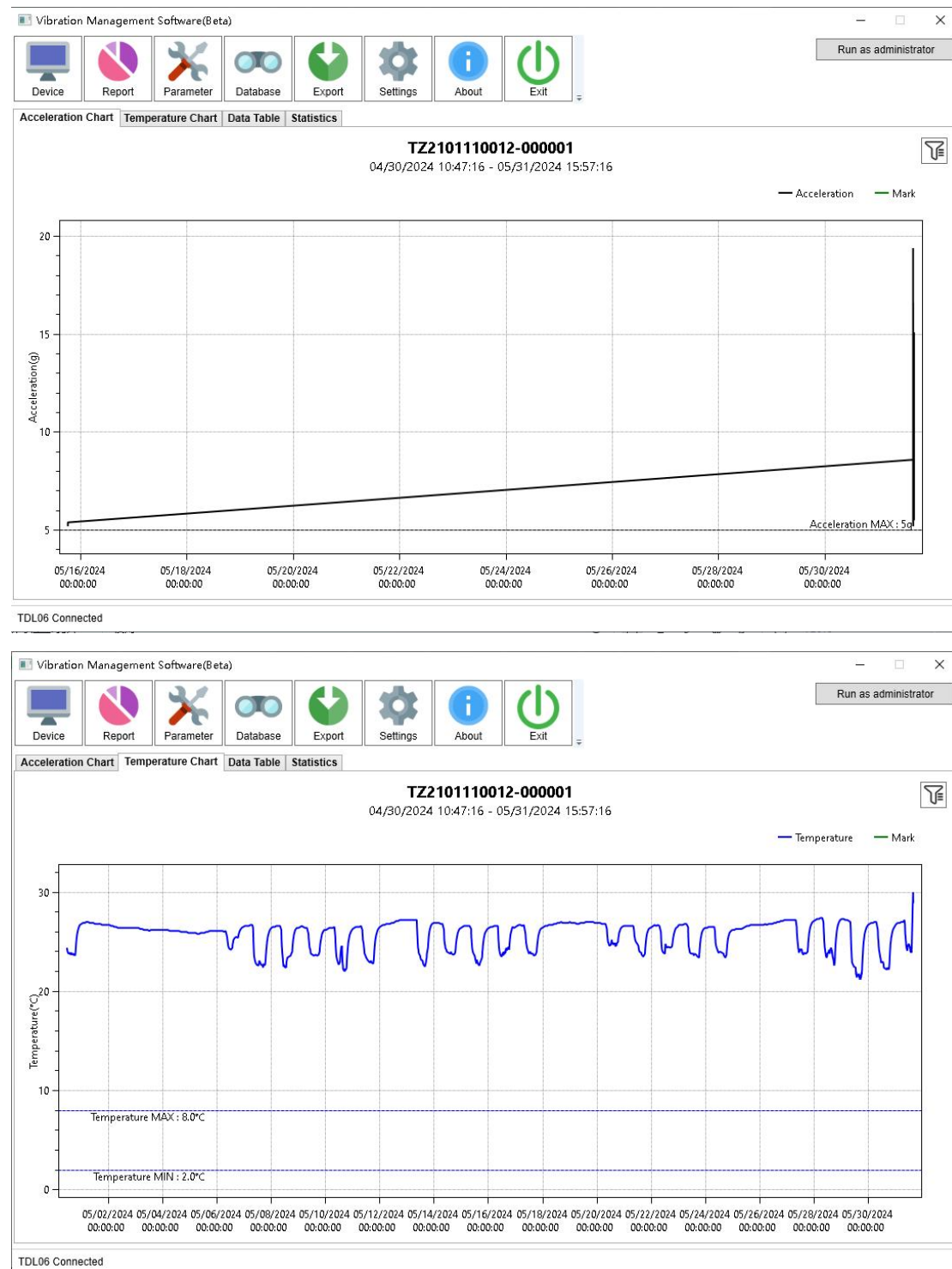
【Max】 The maximum value among the recorded acceleration and temperature readings.

【Min】 The minimum value among the recorded acceleration and temperature readings.

【Average】 The average value of the recorded acceleration and temperature readings.

【MKT】 Average kinetic temperature value.

## IV. Report



Black Line: Acceleration

Dotted Line: Represents setting acceleration alarm reference line.

Blue Line: Temperature.

Dotted Line: Represents setting temperature alarm reference line.

Green Line: Mark.

**Chart operation, as shown above:**

1. move the mouse to the acceleration and temperature axis, hold on the right button and drag the mouse to adjust the acceleration and temperature range.
2. move the mouse to the time axis, hold on the right button and drag the mouse to adjust the time range.
3. move the mouse to different axes, scroll the mouse wheel to adjust the scale.
4. click the left button of mouse to get the detailed time, temperature and acceleration information.

## V. Config

Vibration Management Software(Beta)

Run as administrator

Device Information

Device ID: T22101110012

Device Time: 04/11/2025 03:56:16

System Time: 04/11/2025 07:12:42

Time Zone: UTC : 00

Temperature Scale: ☒ °C ☐ °F

LCD: ☐ Always Bright ☒ Closed After 01 M 00 S

Temperature Calibration: 0 [-5,5]°C

Logging

Log Interval: 00 H 10 M 00 S

Start Delay: 00 H 30 M 00 S

Stop Mode: ☒ Button Stop

Time Format: MM/DD/YY HH:MM:SS

Graphic Display: Separate Acceleration & Temperature

Start Mode: ☒ Button ☐ Timed

Timed Start: 2018 Y 01 M 01 D 00 H 00 M 00 S

Repeated Start: ☒ Enable

Device Temporarily Stopped: ☐ Enable

Accelerometer Sampling Rate: 1344Hz

Accelerometer Work Mode: Alarm Trigger

Alarm

Temperature MIN: 2 [-40,85]°C

Temperature MAX: 8

More settings for temperature alarm

Acceleration alarm upper limit: ☒ 5 g

Description

Transport Data Logger

Template files: [Dropdown] Open file Save file Delete Read Save Default

TDL06 Connected

【Device ID】 The unique ID of data logger, it can't be changed.

【Device Time】 Data logger time.

【System Time】 Computer current time.

【Time Zone】 Data logger time zone.

【Time Scale】 Celsius / Fahrenheit.

【LCD】 Always bright or closed after some time.

【Temperature Calibration】 Set the logger to collect temperature data and replace them.

【Log Interval】 The interval time between two successive points of data.

【Start Delay】 The wait time from the logger started to the first reading saved.

(When manual start is selected, start delay choice box is available.)

**【Stop Mode】** The logger's actual stop mode, including temporary stop, stop via software.

**【Time Format】** Time display format in recorder PDF and CSV reports.

**【Graphic Display】** Separate or combine display curve in graphic.

**【Generate File Type】** The file report type generated by the logger can be set to PDF+CSV/PDF/CSV.

**【Start Mode】** The mode the logger to be started, including button start, timing start. When timing start is selected, timing start selection box is available.

**【Timed Start Time】** The logger starts running at the specified time. When timing start is selected, timing start selection box is available.

**【Repeated Start】** The logger can be set to be repeatable or non-repeatable when the recorder stops recording.

**【Device Temporarily Stopped】** The logger can be set to stop immediately or continue recording after the recorder is inserted into the computer.

**【Accelerometer Sampling Rate】** The logger can be set accelerometer sampling rate

**【Accelerometer Work Mode】** The logger can be set acceleration mode, set this parameter to periodic collection or threshold triggered collection.

**【Alarm】** Alarm set-point, can be set temperature and acceleration.

**【Description】** A brief description of the task, 27 alphabetic and numeric characters.

**【Save File】** After clicking, the software will generate a .config file for the configuration parameters of the interface. You can name it yourself and save it in the "Config" directory by default.

**【Open File】** Select the configuration file. After clicking, the software will read the configuration parameters of this configuration file and display it on the configuration interface.

**【Delete】** Select a profile and click "Delete". This profile will be deleted.

**【Read】** Read logger configuration parameters.

**【Save】** Save logger configuration parameters.

**【Default】** The configuration interface displays the factory configuration parameters of the recorder. You must click "Save" to modify the logger to factory settings.

**Note:**

If parameter settings are made and click Save, the data stored in the recorder will be cleared.

## VI. Database

Vibration Management Software(Beta)

Device Report Parameter Database Export Settings About Exit

Run as administrator

**Query Conditions**

Device ID

Start Time  
2019-01-01 00:00:00

Stop Time  
2025-04-12 11:49:00

Recent

☒ Custom Selection  
☐ 1 Month  
☐ 3 Months  
☐ 6 Months

☐ Alarm **1**

Search

NO.	Device	Device Type	Points	Max	Min	Start time	Stop time	Status
1	TZ2101110012-000001	TZ-TDL06	4496	19.4g 30.0°C	5.2g 21.2°C	04/30/2024 10:47:16	05/31/2024 15:57:16	Alarm

Current 1 Page Total Page 1 Page

**5** Backup & Restore

**2** Comparison **3** View details **4** Delete

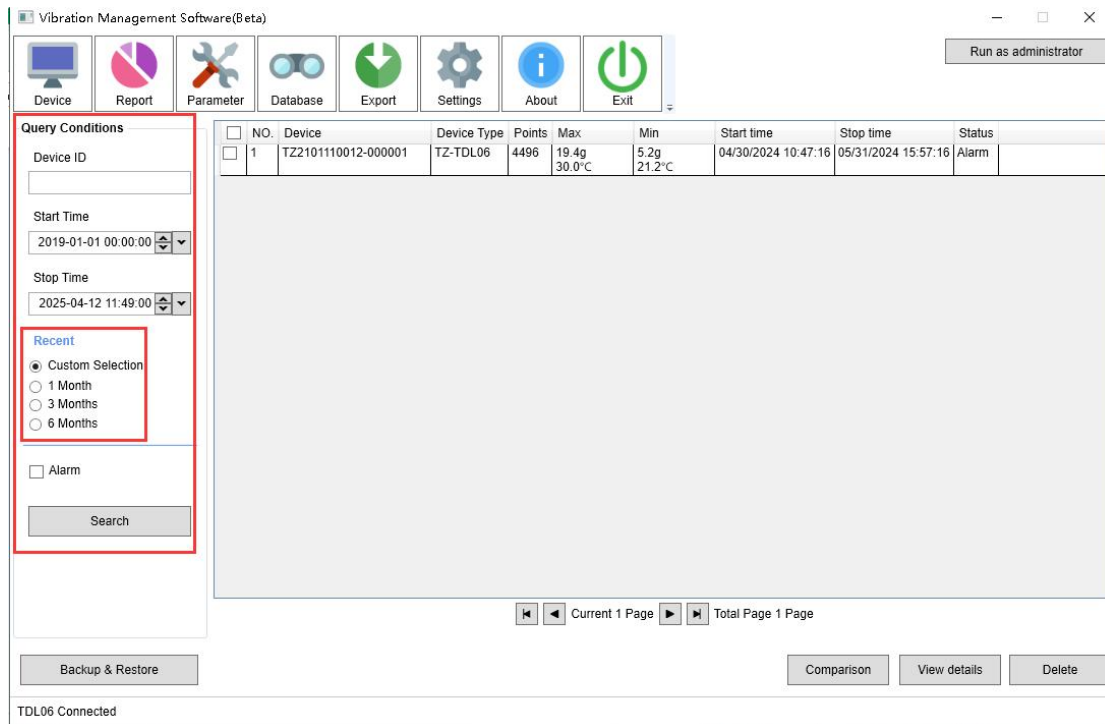
TDL06 Connected

### 1. Filter data

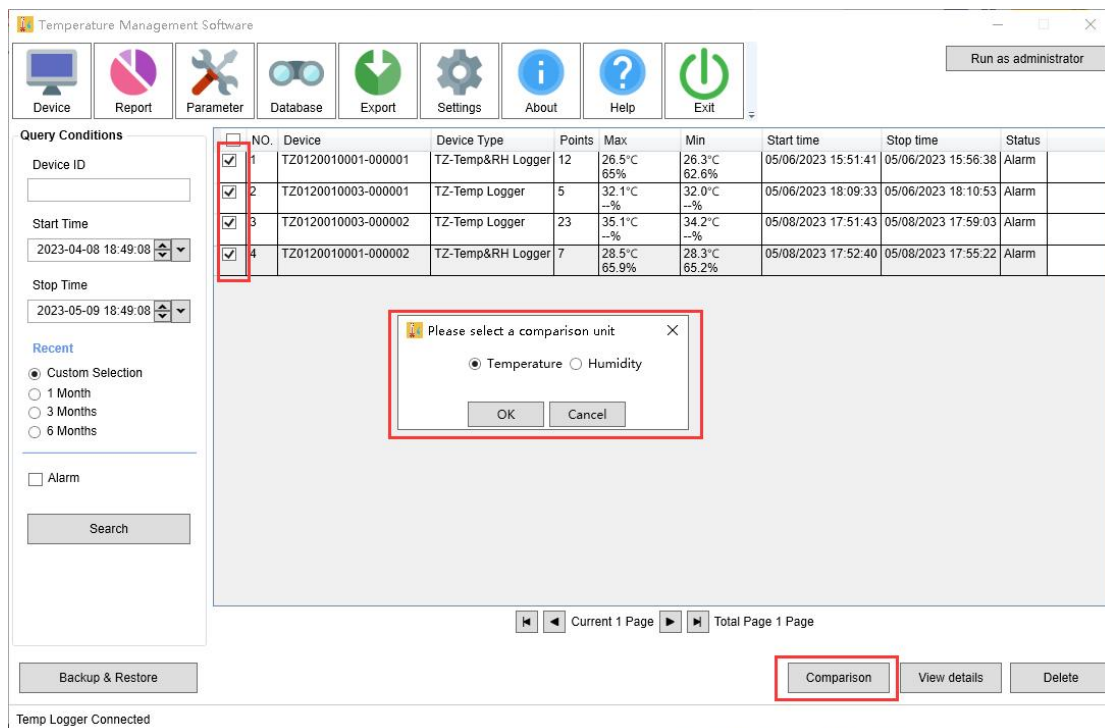
Historical data displays all data by default, and users also can filter data in four ways:

- (1) Fill in the specified equipment number, and only display all the data encoded by this equipment;
- (2) Custom selection, you can set the start time and end time, the software will automatically filter out the historical data in this time period;
- (3) The data of the last month, three months and six months can be selected;
- (4) Check "Alarm" to display only alarm data;





## 2. Comparison



The user first clicks the data table to select multiple items of data to be viewed, and then clicks “multi-select comparison” to select temperature or acceleration for comparison. A maximum of five items can be selected for comparison at a time.

### 3. View Detail

Vibration Management Software(Beta)

Run as administrator

Device Report Parameter Database Export Settings About Exit

Query Conditions

Device ID

Start Time

2019-01-01 00:00:00

Stop Time

2025-04-12 11:49:00

Recent

☒ Custom Selection

☐ 1 Month

☐ 3 Months

☐ 6 Months

☐ Alarm

Search

NO.	Device	Device Type	Points	Max	Min	Start time	Stop time	Status
1	TZ2101110012-000001	TZ-TDL06	4496	19.4g 30.0°C	5.2g 21.2°C	04/30/2024 10:47:16	05/31/2024 15:57:16	Alarm

Current 1 Page Total Page 1 Page

Backup & Restore Comparison View details Delete

TDL06 Connected

The user first clicks the data table to select one item of data to be viewed, and then clicks "View detail".

### 4. Delete Data

Vibration Management Software(Beta)

Run as administrator

Device Report Parameter Database Export Settings About Exit

Query Conditions

Device ID

Start Time

2019-01-01 00:00:00

Stop Time

2025-04-12 11:49:00

Recent

☒ Custom Selection

☐ 1 Month

☐ 3 Months

☐ 6 Months

☐ Alarm

Search

NO.	Device	Device Type	Points	Max	Min	Start time	Stop time	Status
1	TZ2101110012-000001	TZ-TDL06	4496	19.4g 30.0°C	5.2g 21.2°C	04/30/2024 10:47:16	05/31/2024 15:57:16	Alarm

Current 1 Page Total Page 1 Page

Backup & Restore Comparison View details Delete

TDL06 Connected

The user first clicks the data table to select a piece of data to delete, and then clicks the "Delete" button. The software will prompt the user "Delete data?" After the user confirms, the data will be deleted and cannot be restored.

## 5. Backup & Restore

Device

Report

Parameter

Database

Export

Settings

About

Exit

Run as administrator

Query Conditions

Device ID

Start Time

2019-01-01 00:00:00

Stop Time

2025-04-12 11:49:00

Recent

Custom Selection

1 Month

3 Months

6 Months

Alarm

Search

<input type="checkbox"/>	NO.	Device	Device Type	Points	Max	Min	Start time	Stop time	Status
<input type="checkbox"/>	1	TZ2101110012-000001	TZ-TDL06	4496	19.4g 30.0°C	5.2g 21.2°C	04/30/2024 10:47:16	05/31/2024 15:57:16	Alarm

Current 1 PageTotal Page 1 Page

Backup & Restore

Comparison

View details

Delete

TDL06 Connected

Device

Report

Parameter

Database

Export

Settings

About

Exit

Run as administrator

Backup & Restore

Backup

Restore

Tips: 1. The backup data uses the SQLite3 database file. 2. Restoring data will clear the original data.

TDL06 Connected

## 1.Backup

Backup all data. Help you protect your data from accidental loss. You can use “Backup” to create a copy of the data on your hard drive, and then store the data on another device for use.

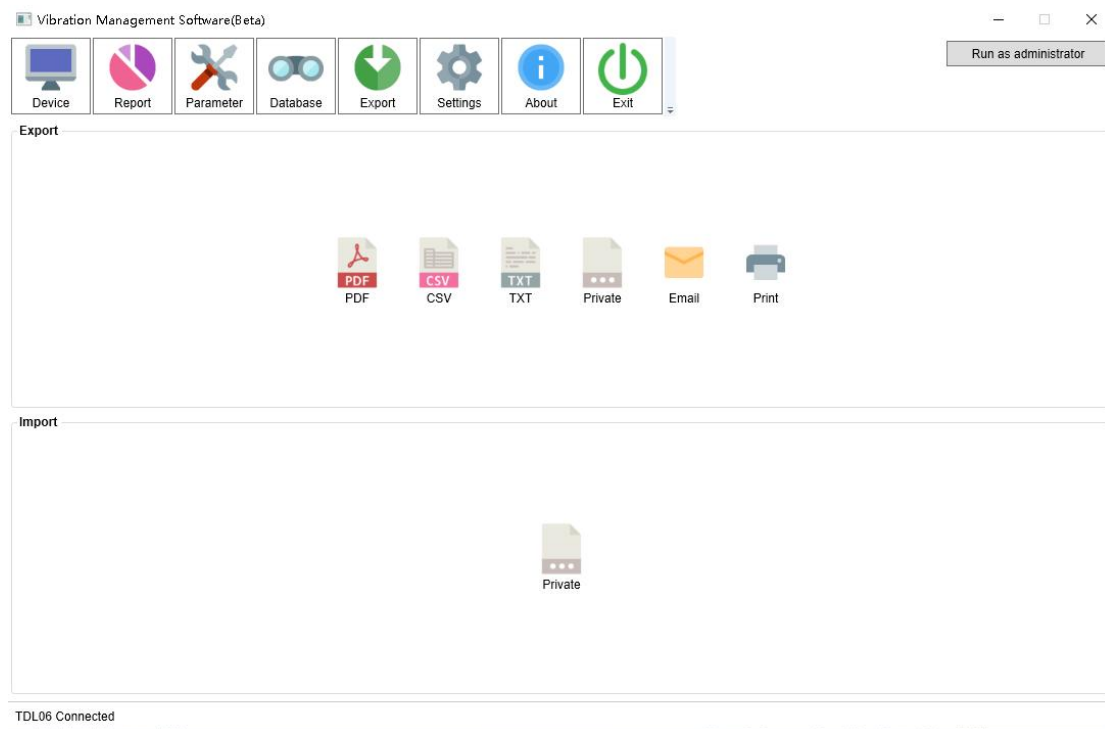
## 2.Restore

Used to restore backup data.

Note: The restore will overwrite the existing data of the software.

# VII. Export

## 1. Export PDF、CSV、TXT data



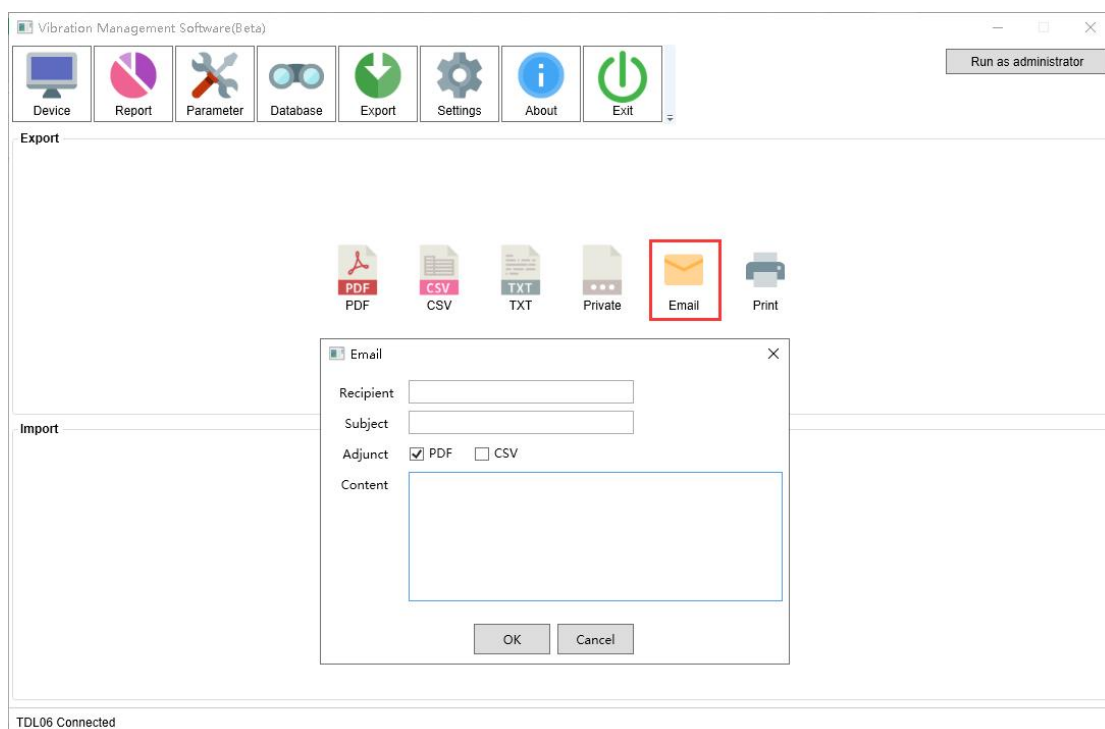
Click the file format and the software will generate a report file in the corresponding format. Saved in the soft root directory by default.

## 2. Export Private file

Used to share data among multiple computers with “Vibration Management Software”. Click on the private format and the software will generate a “.dat” file. Saved in the soft root directory by default.



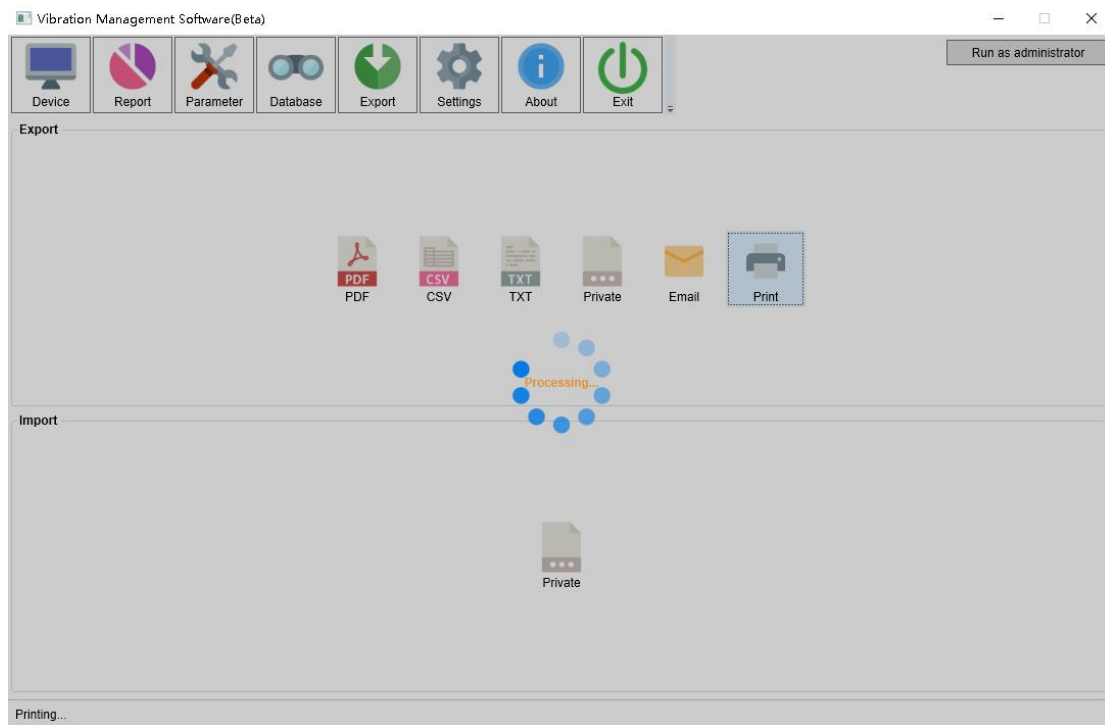
### 3. Send E-Mail



The content of the email includes the email header, PDF, CSV, etc. If you do not want to send PDF or CSV, you can leave this unselected.

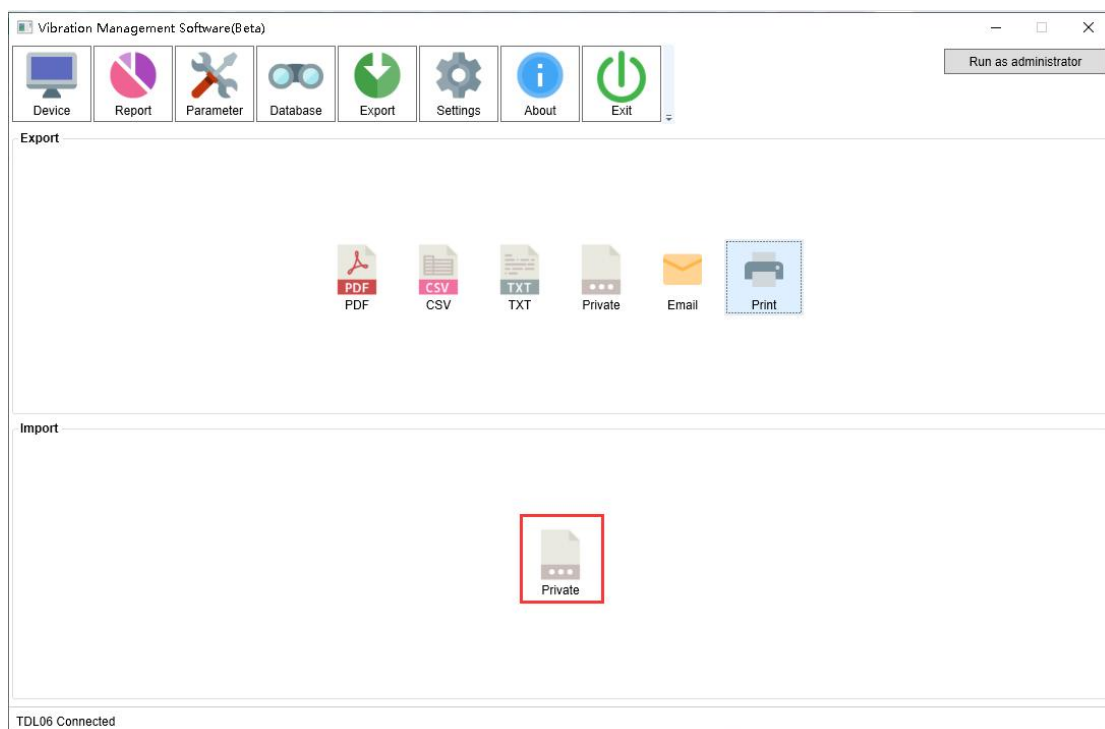
Note: Before sending the email, you need to configure the email information in the Software Settings.

## 4. Print



Note: You need to configure the printer on your computer before printing.

## 5. Import Data



In the import function box, click the "Private " ticket to pop up the select file dialog box.

Import data: Used to share data between multiple computers with “Vibration Management Software” installed. Users can import previously exported data files in “.dat” format into the software, and the software will automatically analyze the imported data.

## VIII. Settings

Vibration Management Software(Beta)

Device Report Parameter Database Export Settings About Exit

Run as administrator

**User Preference**

Time Format: MM/DD/YY HH:MM:SS

Language: English

Tips: Changing the language requires restarting the software!

**Mail Setting**

Email: name@example.com


Password:

SMTP: smtp.example.com

SSL: ☐ Port: 25

**Report Setting**

PDF Report

Logo: 

Upload File

Tips: Please use PNG, JPG format pictures of no more than 1M. The recommended size is 170 \* 56 pixels.

WebSite: http://www.tzonedigital.com

Tips: WebSite cannot exceed 30 characters

Apply Default

TDL06 Connected

### 1. User Preference

Support time format and software language.

**Note:** Changing the language requires restarting the software.

### 2. Mail Setting

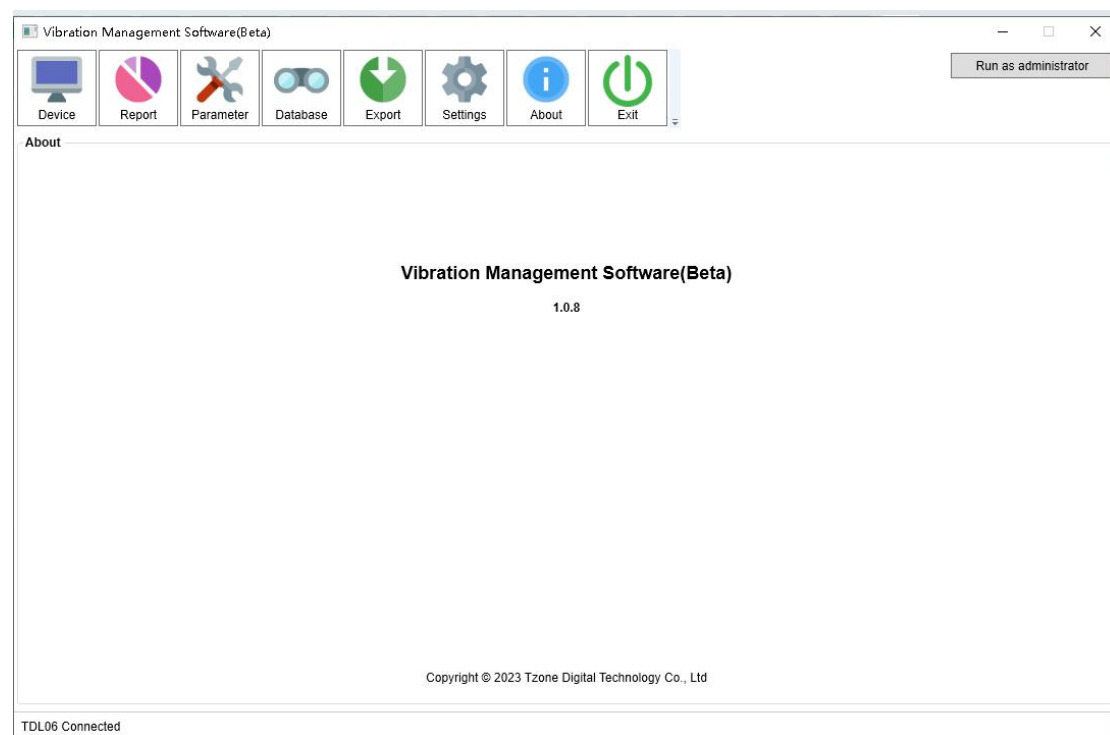
Before using the send mail function, you need to configure the parameters of the mailbox, including the SMTP service address and port of the mailbox (default port 25), sender account, and password.

### 3. Report Setting

Support modification the LOGO and website in PDF report.

Note: Please use PNG, JPG Format Pictures or no more than 1M, The Recommended size is 170\*56 pixels.

## IX. About the updated of the software



Display software information and version.

Software update: The current new version. Opening the software will prompt you to update.

## X. Questions

### The data logger cannot be connected ?

1. Check if the computer USB port is available.
2. Check if the computer USB port is loose.
3. If you are using a USB extension cable to connect the logger, make sure that USB can be read. If the cable is too long, the logger may not be connected successfully.
4. Reading data prompts an error. Check if the computer's disk space where the software is installed runs out.
5. Unplug the USB device, the software does not detect the disconnection.

First click on the software "Force Disconnect" to see if it can be restored; if not,



restart the software and check if it can be restored.