

Monitoring Cloud Platform APP

——User Manual v1.3

1. Overview

“Monitoring Cloud Platform APP” is a mobile device application provided by us for users real-time monitoring remote sensors through mobile devices. It supports to monitor and detect the temperature and humidity, light, vibration change curves, but also to view real-time data, historical data, alarm data, location maps, data reports, Trip record and so on. Instead of traditional manual inspection, to use cloud server intelligent analysis through this way can improve work efficiency and enhances corporate image.

2. APP download

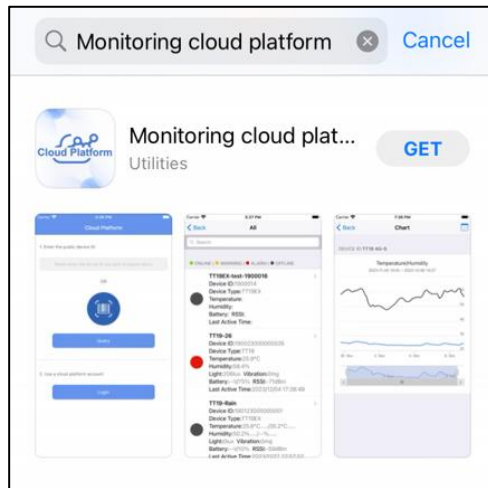
For Android mobile devices, please download it by scanning below QR code or go into Google play Store and search ‘Monitoring cloud platform’ for downloading:

(Support Android 8.0 or newer)



For IOS mobile devices, please go into Apple APP Store and search ‘Monitoring cloud platform’ for downloading.

(Support iOS 14.0 or newer)

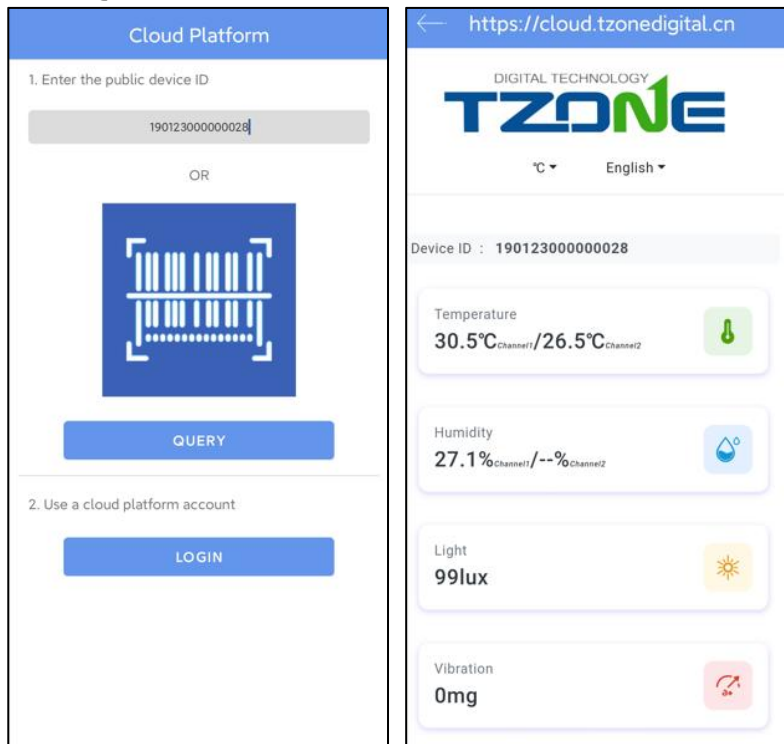


Note: The APP has only query function, but not adding device or setting function.

3. APP use

3.1 Query device

Type the device ID in the input box on the home page or scan the QR code to get the device ID, and then click “QUERY” to find the device.

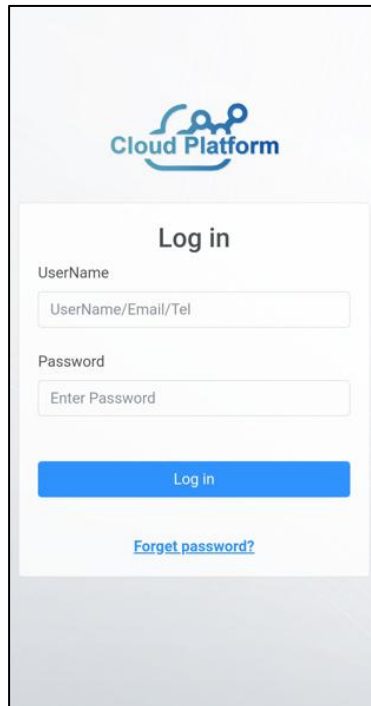


Note: Except for TT18 Single-use devices which can be queried directly, all other public devices can not be queried only after the device ID is added to a certain account on our cloud platform.

Web cloud platform: <http://cloud.tzonedigital.com>

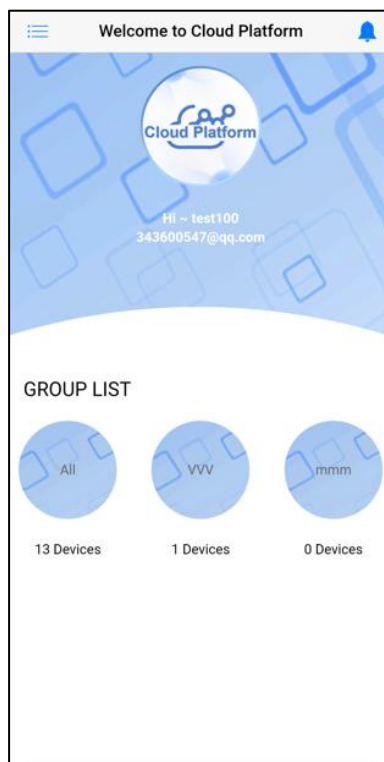
3.2 Log in account

Type the registered user name and password on the cloud platform, then click “Log in”:




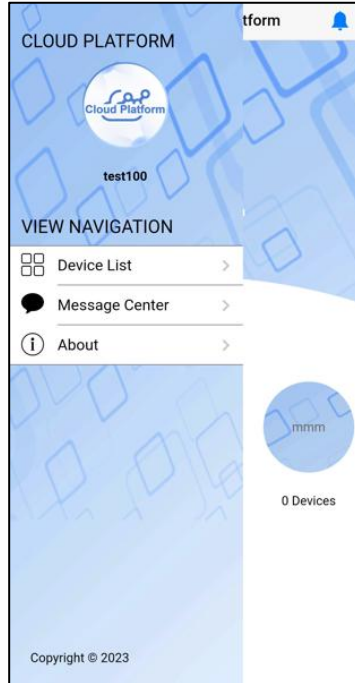
The screenshot shows a mobile application login screen. At the top, there is a logo for 'Cloud Platform' consisting of a blue cloud shape with three circles inside, and the text 'Cloud Platform' below it. Below the logo, the text 'Log in' is centered. Underneath, there are two input fields: the first is labeled 'UserName' and contains the placeholder text 'UserName/Email/Tel'; the second is labeled 'Password' and contains the placeholder text 'Enter Password'. Below these fields is a blue button with the text 'Log In'. At the bottom of the form area, there is a blue link that says 'Forget password?'. The background of the page is a light gray gradient.

3.3 Cloud platform user interface




3.3.1 View “navigation”

Click "" in the upper left corner to display the navigation menu bar.



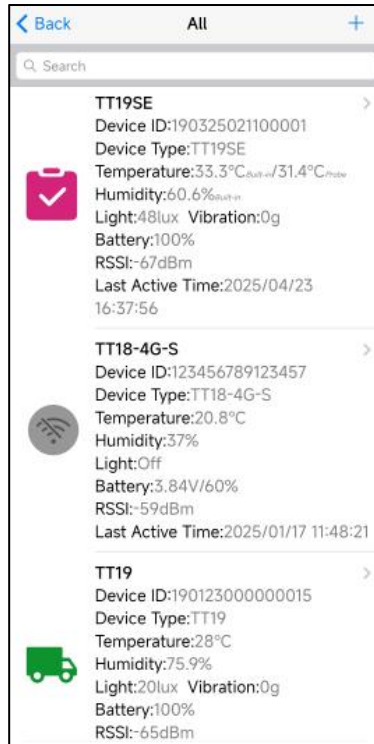
3.3.2 View “Message Center”

Click "" in the upper right corner to display the alarm message center.



3.3.3 View "Group List"

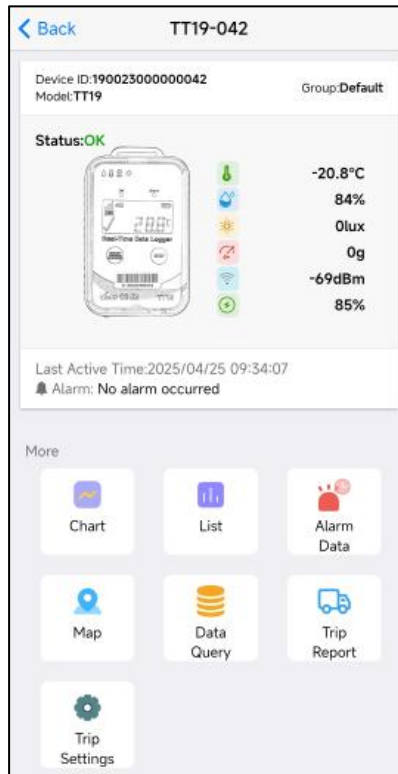
3.3.3.1 Device data can be viewed in "Group List", which can display device name, device ID device type, temperature&humidity, battery, RSSI, vibration, light sensing, last activation time and other information.



3.3.3.2. It supports to search for a specified device by typing device name and ID in the "Search" .



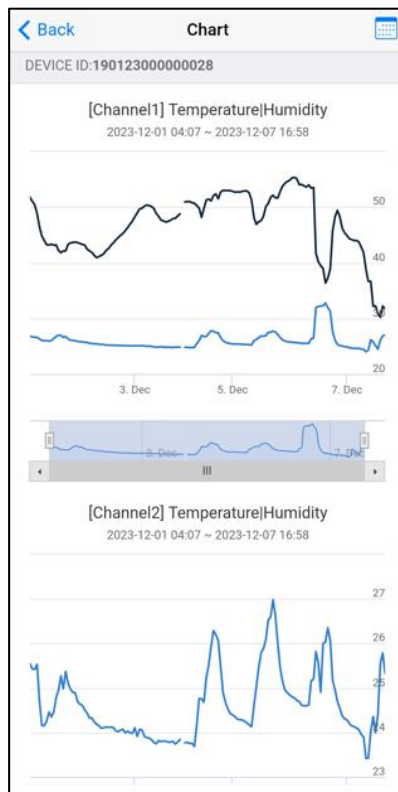
3.3.3.3. To click one device to view more functions about it.



Note: TT19/TT19EX have light sensing and vibration data, and TT19EX has external sensor, but other devices don't have these.

(1) Data Curve

The temperature and humidity curve of latest week is displayed by default, but you can click the upper right corner icon to select other time range.



(2) Data List

The historical temperature and humidity data of latest week are displayed by default, but you can click the upper right corner icon to select other time range, which can be selected in ascending or descending order.

List	
DEVICE ID:190123000000028	
1	2023/12/01 04:07:03 Temperature: 26.8°C 25.7°C Humidity: 52.3% -% Light: 0lux Vibration: 0mg
2	2023/12/01 04:08:03 Temperature: 26.9°C 25.7°C Humidity: 52.2% -% Light: 0lux Vibration: 0mg
3	2023/12/01 04:09:03 Temperature: 26.9°C 25.7°C Humidity: 52.1% -% Light: 0lux Vibration: 0mg
4	2023/12/01 04:10:03 Temperature: 26.8°C 25.7°C Humidity: 52.2% -% Light: 0lux Vibration: 0mg
5	2023/12/01 04:11:03 Temperature: 26.8°C 25.7°C Humidity: 52.1% -% Light: 0lux Vibration: 0mg
6	2023/12/01 04:12:03 Temperature: 26.8°C 25.7°C Humidity: 52% -%

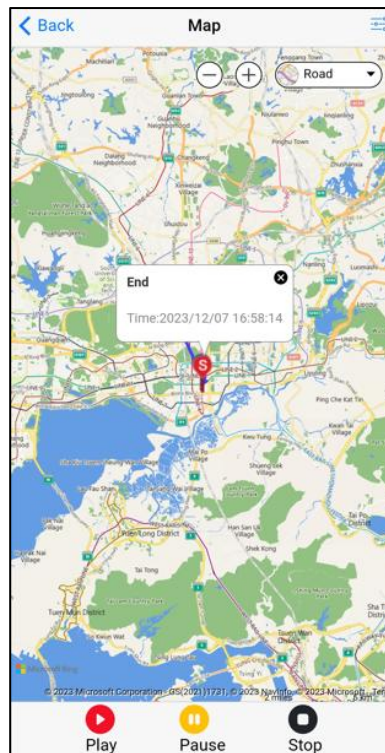
(3) Alarm Data

The temperature and humidity alarm data of latest week are displayed by default, but you can click the upper right corner icon to select other time range, which can be selected in ascending or descending order.

Alarm DataList	
DEVICEID:190123000000028	
1	2023/12/07 16:58:14 Temperature: 30.5°C 26.5°C Humidity: 27% -% Battery: --V 91% Light: 99lux Vibration: 0mg High temperature alarm Low humidity warning
2	2023/12/07 16:28:14 Temperature: 28.7°C 25.6°C Humidity: 30% -% Battery: --V 85% Light: 101lux Vibration: 0mg High temperature alarm
3	2023/12/07 16:23:14 Temperature: 27°C 25.1°C Humidity: 31% -% Battery: --V 83% Light: 95lux Vibration: 0mg High temperature alarm
4	2023/12/07 16:18:02 Temperature: 25.8°C 24.7°C Humidity: 32% -% Battery: --V 73% Light: 103lux Vibration: 0mg High temperature alarm
2023/12/07 16:13:02	

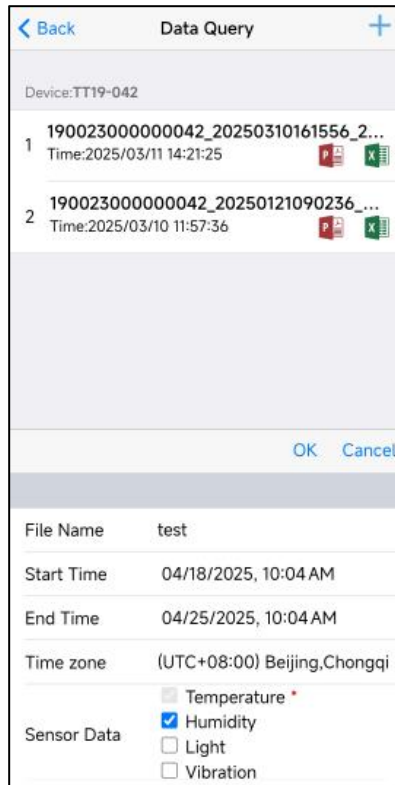
(4) Location Map

The location map tracks of latest week are displayed by default, but you can click the upper right corner icon to select other time range.



(5) Data Query

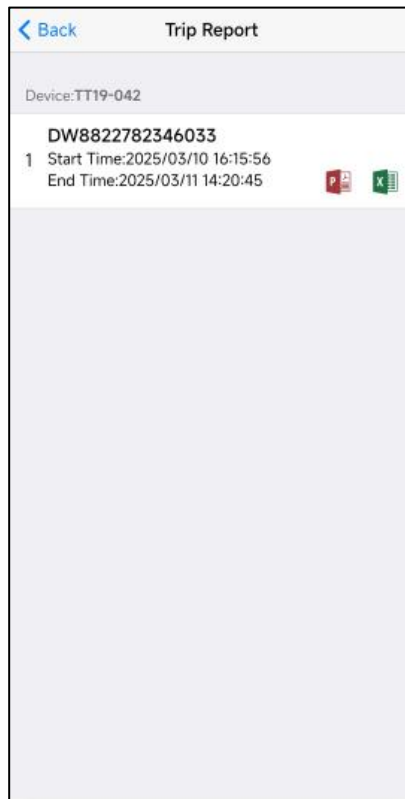
Click "+" on the upper right corner and type the report name as you prefer to download the data report of the latest week by default, or to select other time range,also can select the time zone and the required sensor data type.



(6) Trip Report

When the TT19 series completes the trip, the data report will be automatically displayed.

(Note: Other device models don't have trip reports.)



(7) Trip Report

TT19 series can configurable trip settings (Note: Other device models don't have trip Settings) :

Shipment	Alarm Settings
* Select device: TT19-042(190023000000042)	* Built-in - Temperature alarm threshold (°C) -40 - 100
* Recording Interval (min): 60	* Built-in - Humidity alarm threshold (%) 0 - 100
* Reporting Interval (min): 60	* Light alarm threshold (lux) 0 - 200
* Open GPS: Enable	* Vibration alarm threshold (g) 2
Shipment ID: DW8822782346033	Mail alarm notification
Customer company: skywalker	Tel China +86
Next	Last Save

Shipment

Select device: Device name+device ID number, default is your choice device, no need to click to select.

Recording Interval: You can set the device recording interval, the default is 60min. **Reporting**

Interval: You can set the device reporting interval, the default is 60min. **Open GPS:** After turning on, the device will search for GPS, and the default is the opening status. (Only tt19/tt19ex supports it. Tt19si has no GPS function)

Shipment ID: You can fill in the shipping number, no more than 30 characters. **Customer company:** no more than 20 characters.

Alarm Settings

Built-in -Temperature alarm threshold(°C): Built-in sensor temperature alarm settings.

Built-in -Humidity alarm threshold(%): Built-in sensor humidity alarm settings

Probe-Temperature alarm threshold (°C): External sensor temperature alarm setting

Light alarm threshold (lux): Light alarm settings.

Vibration alarm threshold (g): Vibration alarm set.

Mail alarm notification: Email alarm notice.

Tel: Fill one mobile phone number to receive Alarm SMS not(It requires payment to be enabled).